



**HELLENIC ELECTRICITY MARKET OPERATOR S.A.**  
Information: M. Asimakopoulou (masimakopoulou@lagie.gr)

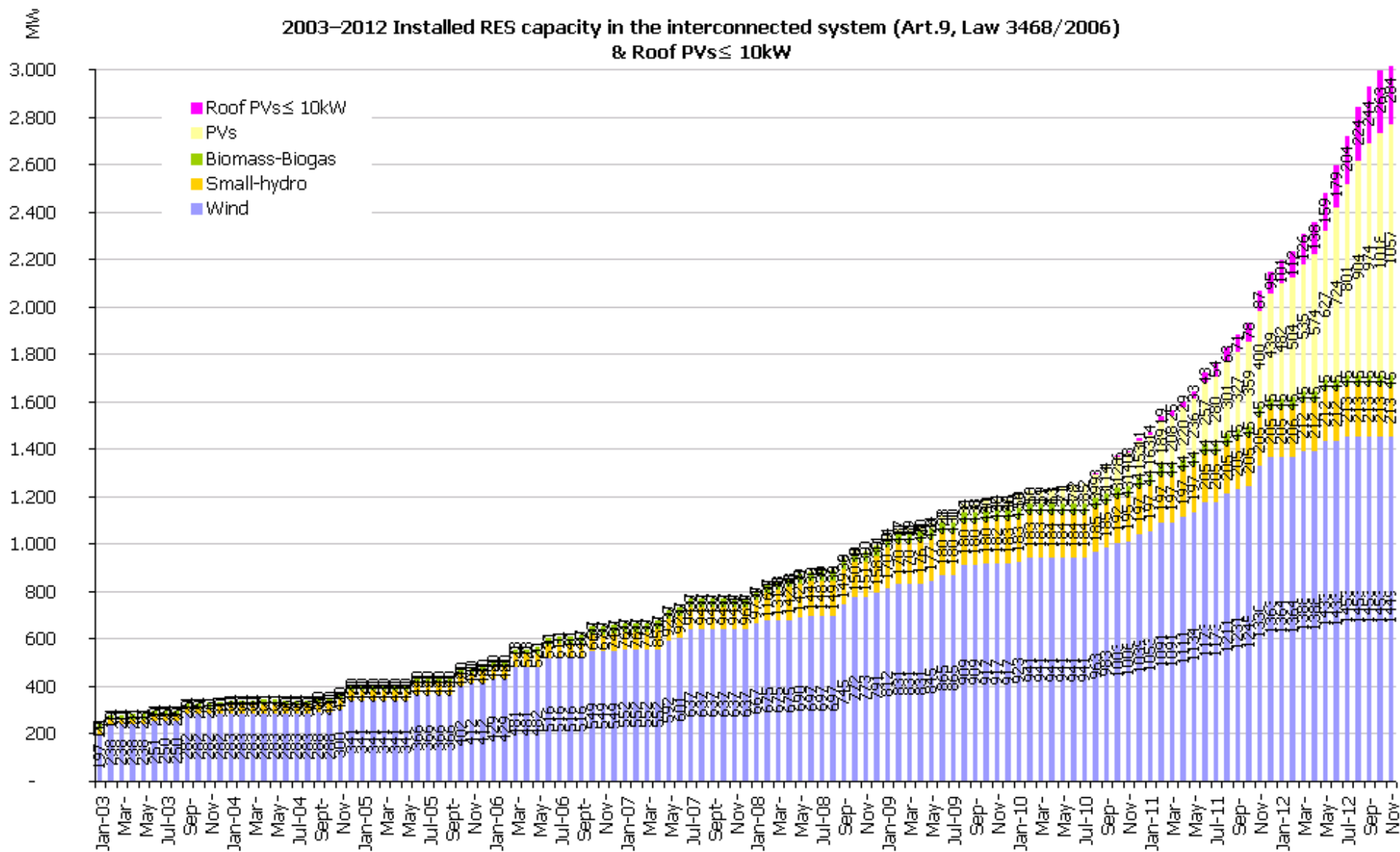
## **Renewable energy sources and CHP**



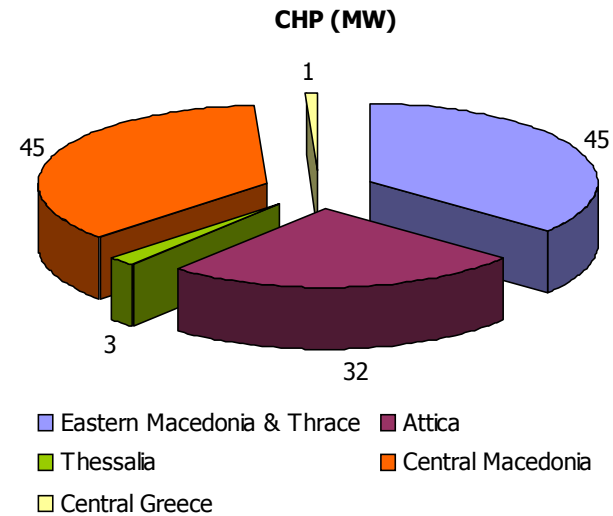
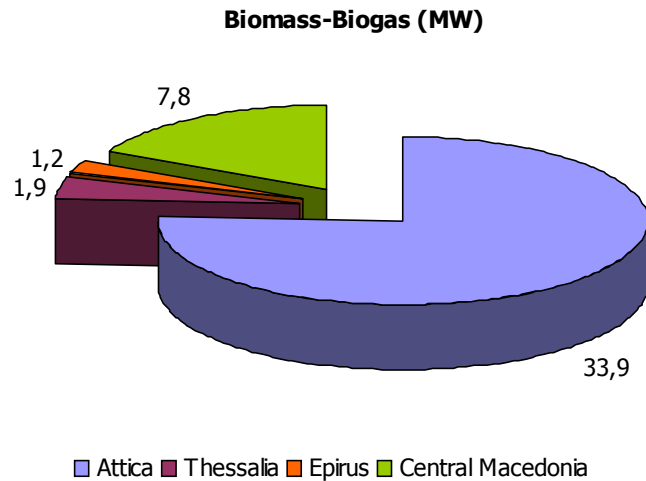
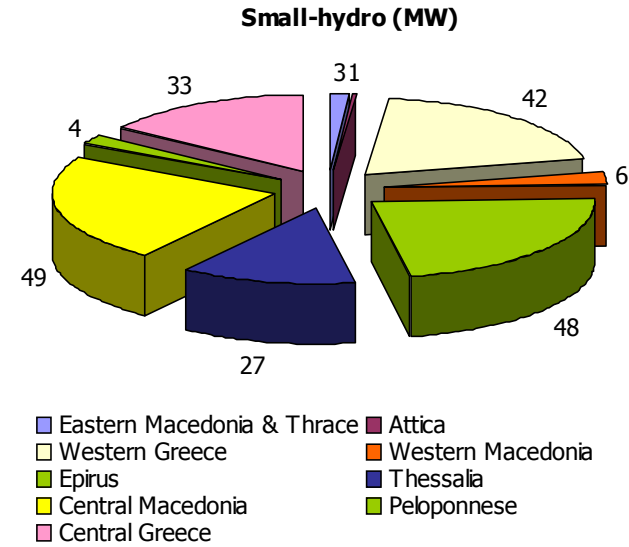
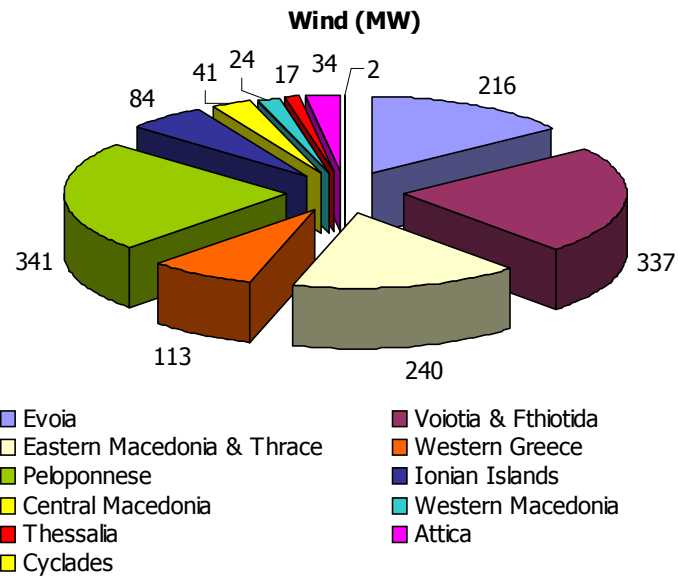
**Monthly Bulletin**

**November 2012**

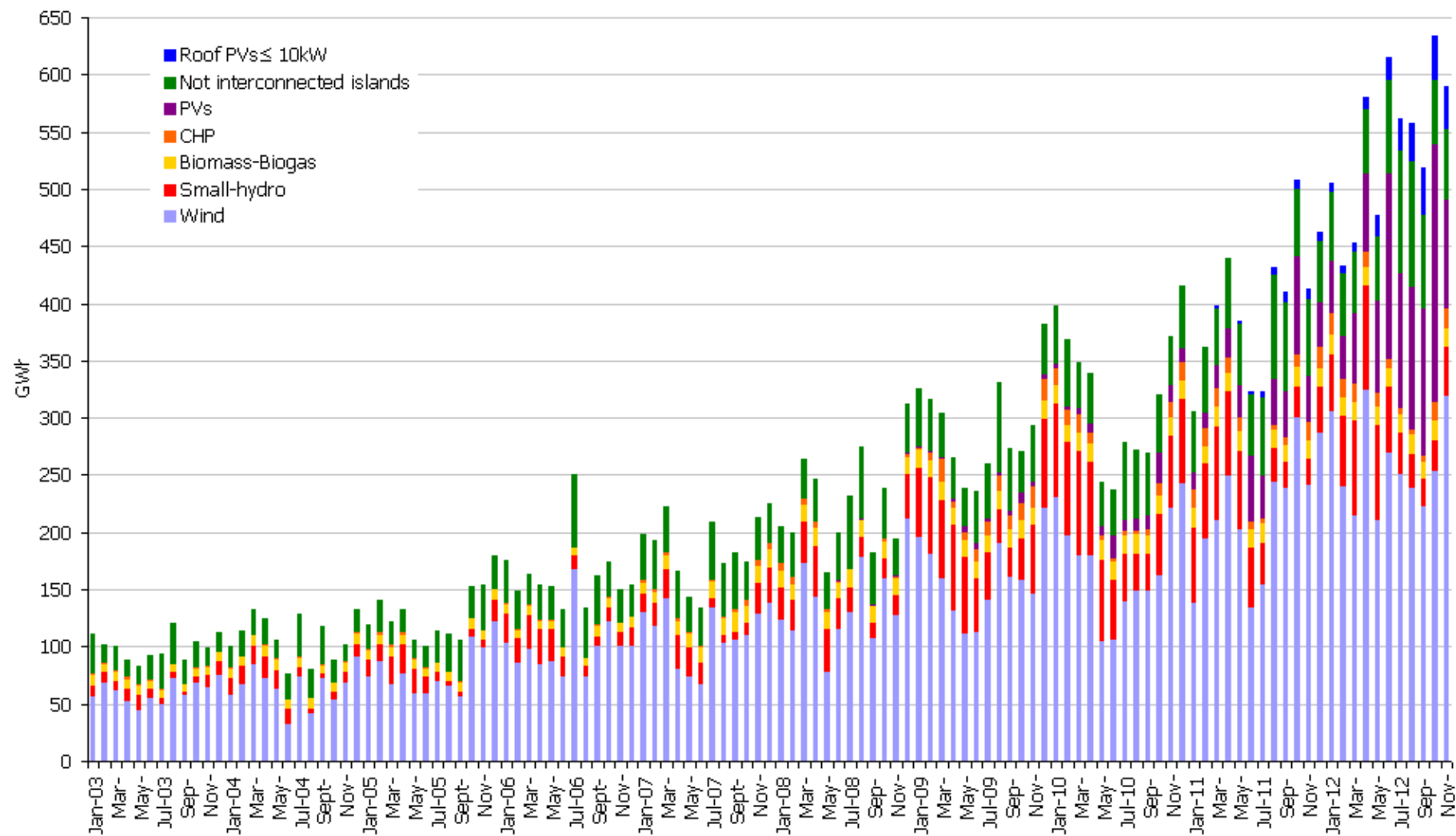
2003–2012 Installed RES capacity in the interconnected system (Art.9, Law 3468/2006)  
& Roof PVs ≤ 10kW



## 2012 Regional distribution of RES and CHP stations in the interconnected system (Art.9, Law 3468/2006)



2003-2012 Total Greek electricity generation from RES and CHP (Art.9 and 10, Law 3468/2006) & Roof PVs ≤ 10kW

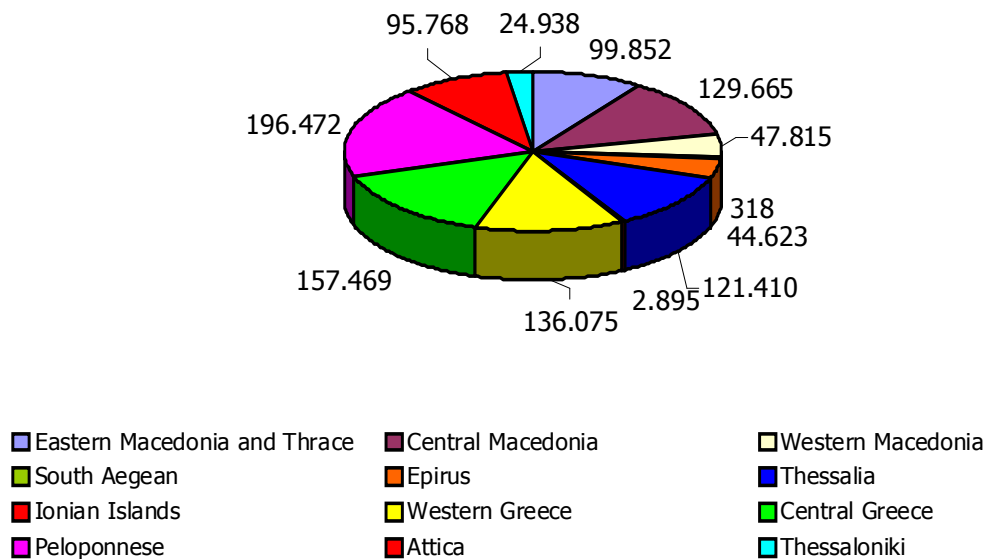


**Electricity generation from RES and CHP in the interconnected system 2012 (Article 9, Law 3468/ 2006)**

Month	Wind		Small-hydro		Biomass-Biogas		CHP		Total	
	Energy Generated (MWh)	Installed Capacity (MW)	Energy Generated (MWh)	Installed Capacity (MW)	Energy Generated (MWh)	Installed Capacity (MW)	Energy Generated (MWh)	Installed Capacity (MW)	Energy Generated (MWh)	Installed Capacity (MW)
January	305.773	1.364	49.672	205	17.125	45	18.382	89	390.952	1.703
February	240.182	1.364	61.441	206	15.604	45	16.776	89	334.002	1.704
March	214.512	1.388	83.472	212	16.109	45	15.942	89	330.035	1.733
April	324.614	1.388	91.283	212	16.117	45	12.915	89	444.928	1.733
May	210.050	1.433	84.085	212	15.952	45	11.468	89	321.554	1.779
June	269.662	1.433	57.020	212	15.906	45	8.780	89	351.367	1.779
July	251.247	1.453	35.556	213	16.136	45	5.584	89	308.523	1.800
August	237.963	1.453	30.254	213	16.862	45	5.060	89	290.139	1.800
September	222.412	1.453	23.550	213	15.971	45	5.412	89	267.346	1.800
October	253.099	1.453	27.469	213	16.767	45	16.548	90	313.883	1.801
November	319.281	1.449	42.662	213	16.319	45	16.429	90	394.691	1.796
December	-	-	-	-	-	-	-	-	-	-
<b>Total (MWh)</b>	<b>2.848.795</b>		<b>586.463</b>		<b>178.868</b>		<b>133.296</b>		<b>3.747.421</b>	

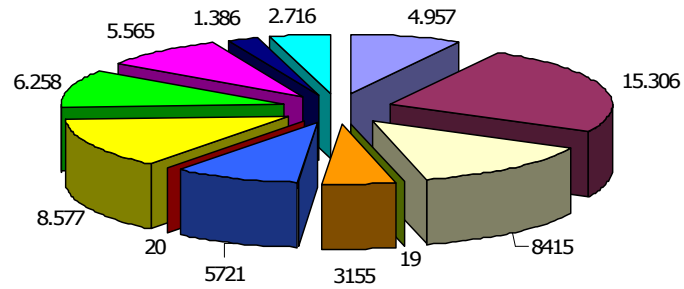
<b>Photovoltaic stations of the interconnected system 2012 (Article 9, Law 3468/2006)</b>			
Month	Energy generated (MWh)	Capacity (MW)	
		Total with PPA	In operation
January	45.357	2.233	482
February*	37.779	2.322	504
March	61.577	2.385	535
April	68.171	2.401	574
May	79.975	2.414	627
June*	161.521	2.437	724
July	117.201	2.734	801
August	123.362	2.787	937
September	127.732	2.832	974
October*	224.728	2.919	1.018
November	95.235	3.447	1.057
December			
Energy generated in 2012 (MWh)	1.142.637,90	* Months of energy measurement for Low Voltage PVs	

**Photovoltaic stations in operation per region (kW)**

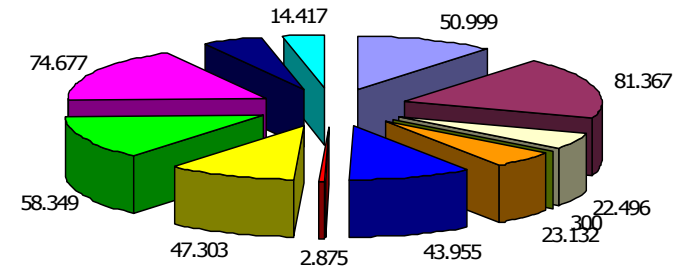


## First stage of deployment program of PV stations – Distribution of PV stations in operation per region (kWp)

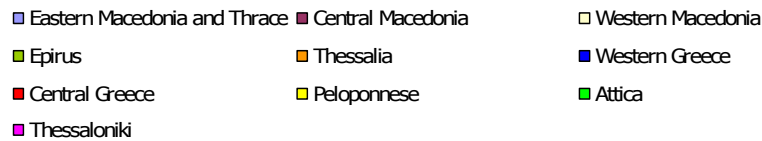
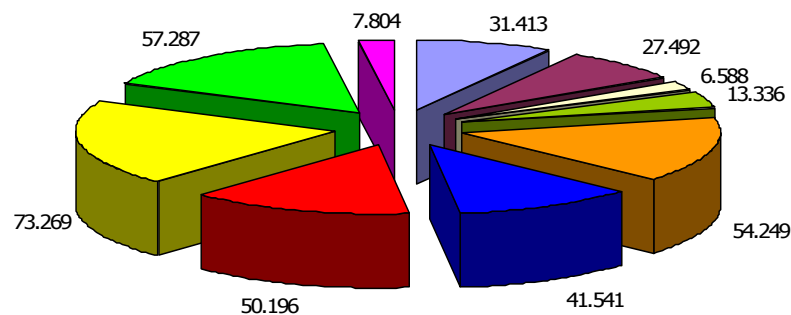
**PV <= 20 kWp**



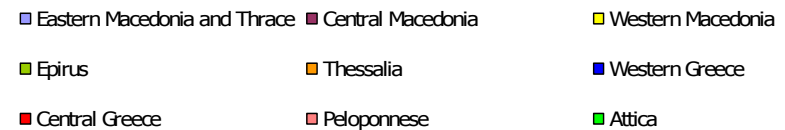
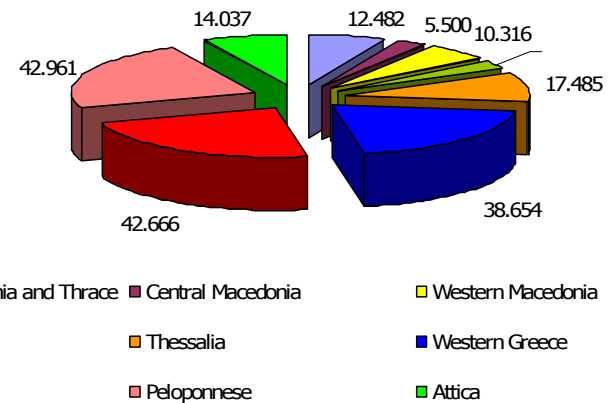
**20 kWp < PV <= 150 kWp**



**150 kWp < PV <= 2 MWp**



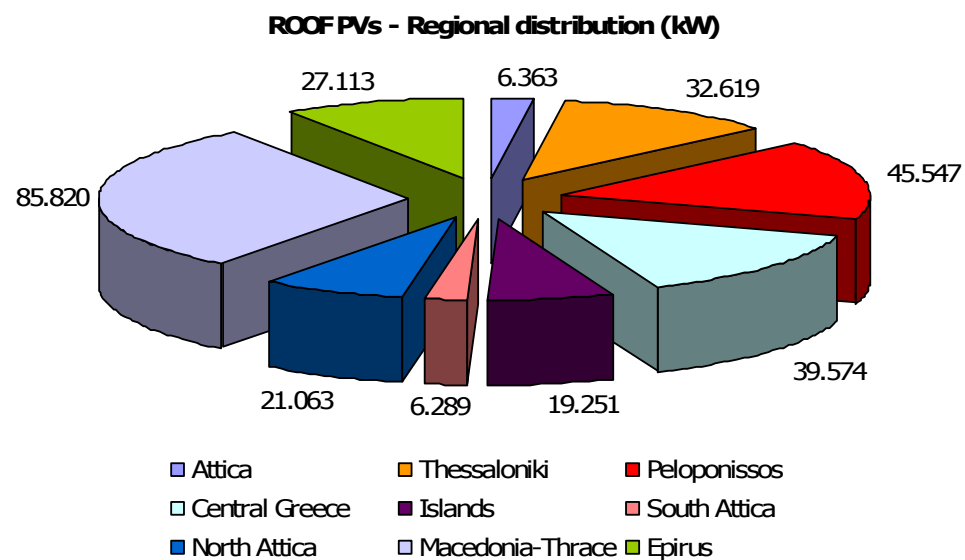
**PV > 2 MWp**



## Roof PVs ≤ 10kW

ROOF PVs ≤ 10kW		
	ENERGY (MWh)*	CAPACITY (MW)
January	9.150	101
February	6.527	112
March	8.593	126
April	9.852	138
May	19.164	159
June	19.906	179
July	28.344	204
August	34.252	224
September	41.373	244
October	39.619	263
November	37.852	284
December		
Total Energy (MWh)	254.633	

\* The energy generated refers to the monthly measured energy by the Distribution Network Operator.





### Parameters of RES & CHP Billing

